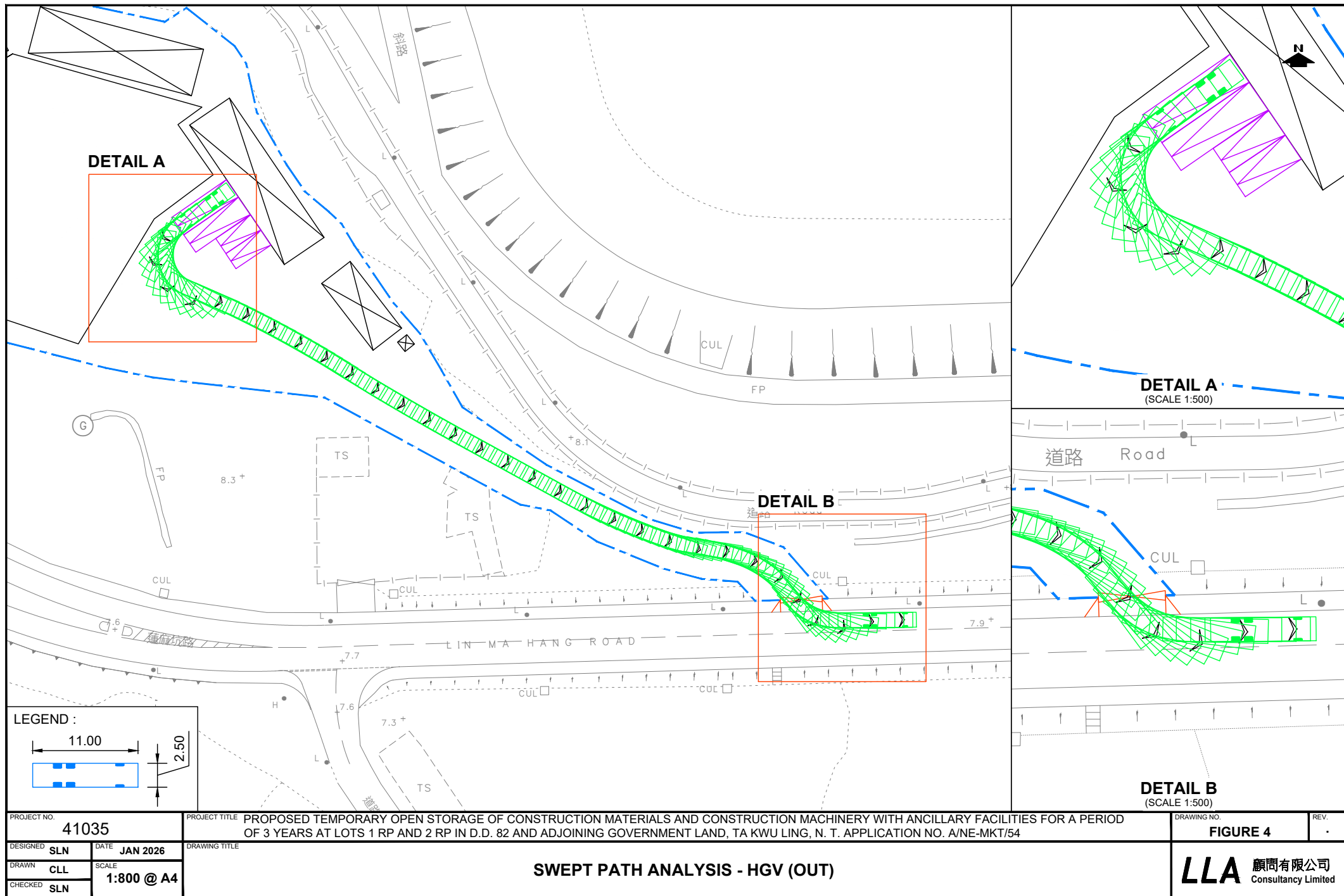
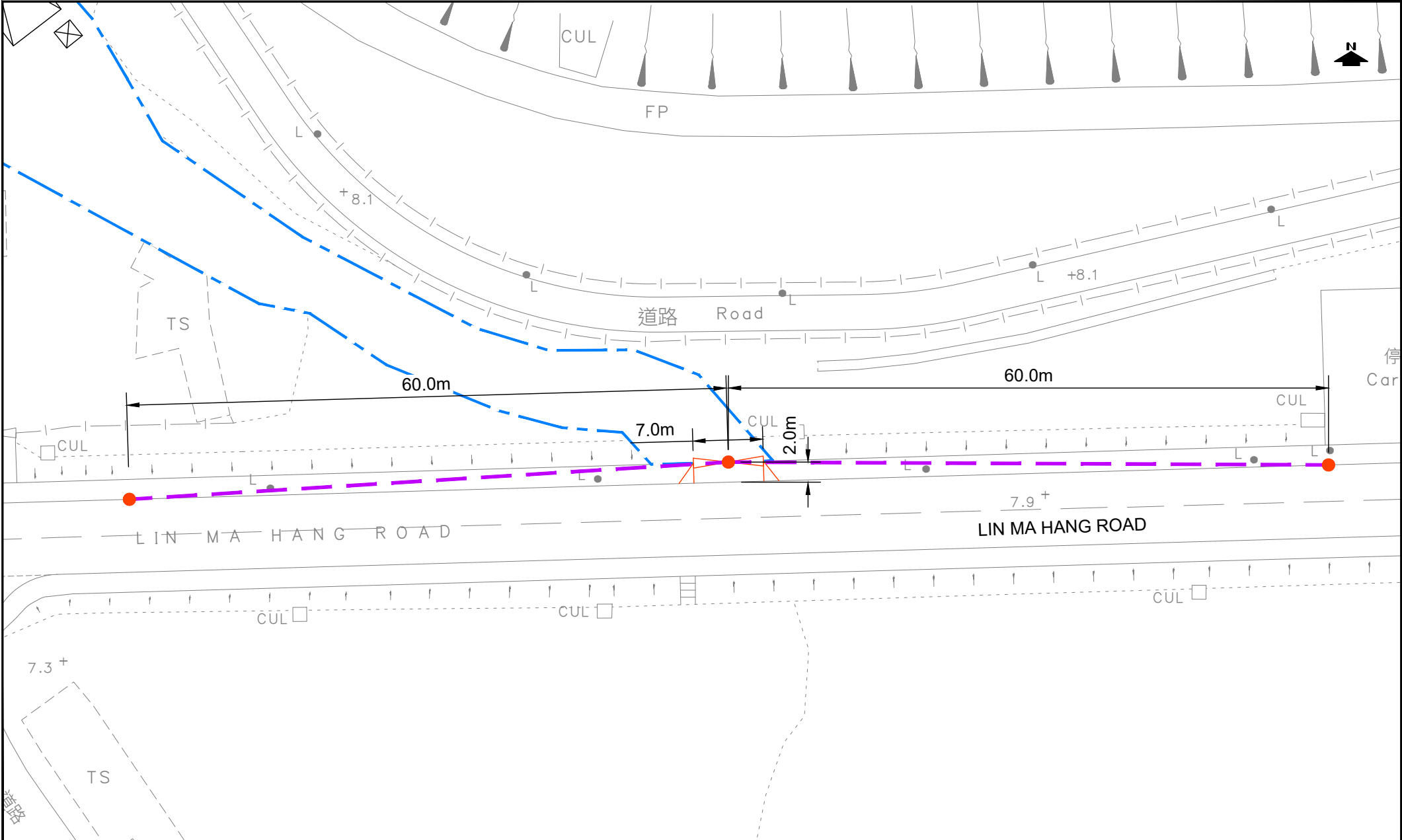


PROJECT NO. 41035		PROJECT TITLE PROPOSED TEMPORARY OPEN STORAGE OF CONSTRUCTION MATERIALS AND CONSTRUCTION MACHINERY WITH ANCILLARY FACILITIES FOR A PERIOD OF 3 YEARS AT LOTS 1 RP AND 2 RP IN D.D. 82 AND ADJOINING GOVERNMENT LAND, TA KWU LING, N. T. APPLICATION NO. A/NE-MKT/54		DRAWING NO. FIGURE 2	REV. .
DESIGNED SLN	DATE JAN 2026	DRAWING TITLE PROPOSED ACCESS ARRANGEMENT		LLA 顧問有限公司 Consultancy Limited	
DRAWN CLL	SCALE 1:500 @ A4				
CHECKED SLN					





PROJECT NO.	41035
DESIGNED	SLN
DRAWN	CLL
CHECKED	SLN

DATE	JAN 2026
SCALE	1:500 @ A4
PROJECT TITLE	PROPOSED TEMPORARY OPEN STORAGE OF CONSTRUCTION MATERIALS AND CONSTRUCTION MACHINERY WITH ANCILLARY FACILITIES FOR A PERIOD OF 3 YEARS AT LOTS 1 RP AND 2 RP IN D.D. 82 AND ADJOINING GOVERNMENT LAND, TA KWU LING, N. T. APPLICATION NO. A/NE-MKT/54
DRAWING TITLE	SIGHT LINE ANALYSIS

DRAWING NO.	FIGURE 5
REV.	.
LLA 顧問有限公司 Consultancy Limited	